

# CAT Version 5.33

March 2005

CAT on-line entry at [www.92computing.com](http://www.92computing.com) can include an on-line payment facility for Visa and Mastercard. This is being tested with a couple of tournaments currently and is proving very convenient for players and very easy from the CAT administration viewpoint.

## New Features

### Player Entries

When using on-line entries and adding a new player from an email the contents of the clipboard are added to the Player Details toolbox on the right of the main screen. (Provided this toolbar is displayed). This is very useful when adding the new entry if you need to refer back to the email details as this is then available on screen to the right. The email button on the Player Details toolbox also displays what was copied from the email entry.

The lists of extra charges in Player Entries | Print now displays a name twice ( or more if repeated) if the extra charge code is entered twice e.g. \*1\*1 . The print also includes the total number of the extra charges and the total to be collected for this charge.

### Fixes in Version 5.33

When minimising Player Entries or leaving Players Entries open and switching to another task other than CAT or when resuming a computer from a screen saver it has been possible to click in error the CAT main menu and launch Players Entries again. This results in CAT trying to open the database twice resulting after a few clicks with an error message with CAT closing down. This has been repaired so if an attempt to reopen Player Entries is attempted you are warned that Player Entries is still open and to locate the Players Entries tab to resume players entries.

Player Entries Find - A Find error occurred if the following steps were done in this sequence

Add a new player and accept. Then immediately select the Find button and type in a name. In some cases before the name would completely entered an error message would appear and CAT would close down requiring a rebuilt with a risk some data just entered would need to be re-entered. This has been repaired and the Find button should not create this error message.

# CAT Version 5.31

December 2004

## New Features

- \* Match Detail selection added to Time Draw and Alter Time Draw.
- \* In Time Draw Match Detail the ability to temporarily override players times available or courts available without having to exit Time Draw and consequently being able to schedule extra matches without exiting Time Draw.
- \* Players Times new features

## Time Draw | Match Detail

The Match Detail button is located on the lower right on the Time Draw Scheduling screen. This new selection will be very useful when scheduling matches as all details of a match can be viewed without having to exit Time Draw and thus start scheduling again. The value of this selection will be very evident when you are trying to schedule a particular match and can not work out why the match will not be scheduled by Time Draw. Typically this be evident with the message of 'no times available' or 'no courts available' when you try to schedule a particular match.

When the Match Detail button is selected all information related to the particular match is displayed, including all the possible players who can play in the match. This will include details of the match commitments for each player in the match, including the match separation /rest times and any player time exemptions that are in effect for each player in the match. A sample of this window is shown below. Time slots available for a player to play another match are shown in green, while actual times for matches already scheduled appear in orange with red used to show time slots which are not available due to match separation or player time exemptions. The courts available for each time slot display below the list of players in the match. Any time slots which have all courts allocated appear in red.

5. OPEN MIXED DOUBLES

Players	Match time slots																			
Event 5 Match 2	9	9	1	1	1	1	1	1	1	1	2	2	3	3	4	4	5	5	6	6
	0	3	0	0	1	1	2	2	0	3	0	3	0	3	0	3	0	3	0	3
	0	0	0	3	0	3	0	3	0	3	0	0	0	0	0	0	0	0	0	0
C. CHIRGWIN & P. FORSYTH																				
M. ARNAUDON & B. INGRAM																				
Courts Available	6	4	8	7	5	7	6	9	9	8	7	9	7	10	8	10	9	9		

This event has a 1H30mins match separation

■ Player Time exemption or Player Match Time or No courts available.

5. OPEN MIXED DOUBLES

Event **5**

Match **2**

Display

Override

Times

Courts

Close

Underneath this coloured display is further information regarding the match including the match separation for the event, any timing restrictions e.g. not before or not after times, any round restrictions or and the setting of the maximum matches per player switch if used. This is followed by a key explaining the colours used.

Match Detail will enable prompt analysis of why the match will not schedule. Also the facility will enable a quick lookup of which match an event and match number represents without having to look at printed copies of the event draws or exit Time Draw and view the event draw.

The match detail screen can even be used to assist with scheduling where manual or partial manual means are still being used. IN the above example by selecting match detail and entering event 5 match 2 it is obvious that a suitable time for this match would be from 4:00 through till 5.30 pm.

## Override Selections

There are two override selections - This enables changes to be made to allow a particular match to schedule with Time Draw without the need to either exit Time Draw then make changes to Time Draw Data and then run Time Draw again or save the Time Draw then use the Alter Time Draw module to add the match.

**Override Times** - allows all the players in the match to be tagged as available to play at any nominated time by changing the time availability for all players to green and thus allowing the match to be scheduled in Time Draw by closing the

match detail window then scheduling the match. This has not been possible in previous versions and will be very useful if several matches cannot be scheduled. Of course there is always the option to exit Time Draw make the changes required in Time Draw and then run Time Draw again.

**Override Courts** - allows the number of courts at a particular time slot to be increased by 1 court or more if needed. This will be useful in a situation where a match will not schedule because there are no courts available at this particular time slot. Once the courts have been increased then close the match detail window and schedule the match in Time Draw.

Note: The override times and override courts selections only make temporary changes in relation to the scheduling of the current Time Draw. When you leave Time Draw the settings revert to the settings last active in Time Draw Data. To make permanent changes to these settings Time Draw Data should be used.

## **Alter Time Draw**

Alter Time Draw already has numerous ways of adding matches, changing times for matches and these are still the same. In addition now the match detail window can be displayed by ticking the tick box at the bottom right of the View window which appears after pressing the V key or selecting the View button in Alter Time Draw.

The match detail window in Alter Time Draw displays all the players in the displayed match and their match times and any time exemptions in red with the match selected shown in yellow. Green shading applies to time slots where the match could be moved to if required. This match detail window does not display the event parameters such as event timing or round restrictions as these have no relevance in Alter Time Draw as they can all be overridden and matches moved to any time slot.

In the sample below the match display for the match event 1-13 is shown (below the green match viewing window). This would display after the V key was pressed on the match 1-13 on the Alter Time Draw matrix.

## **Player Times**

A error indicator (a red circle) will now display when first starting Player Times if any errors are found including players without a first time available and any errors in the allocation of special time exemptions. A special time exemption is a period during a day's play, after a player has played their first match where the player is not available to play. If there are any players without a first time available allocated then a selection appears to the right of the error symbol - Set time for players with no time allocated, This selection allows all players without a time allocated to be set to a nominated time usually the start of play.

**Custom Time Slots** - There was a recent problem reported from a tournament in Bermuda where a set of custom time slots was selected and CAT did not allocate the correct corresponding times for each time slot. This led to some players being tagged as not available to play all day when in fact they were available. To avoid this issue in future this version checks in Players Times that all the correspondences between the custom time slots and actual times is set correctly. If not set correctly the user is prompted for the missing information. Two additional buttons are provided when using custom time slots;

Time > Slot conversion - allows a review of the Time slot correspondences.

Reset Custom Time > Slot - allows the complete set of correspondences to be input again if found to be in error.

# CAT Version 5.30

November 2004

## New Features

- \* Create pdf draw files from within CAT.
- \* Email player entries from one CAT system to another.

## Utilities

### Upload to Internet

A new draw format has been developed for the draw web pages. The Draw display format appears once the Create Web Navigation pages is selected as shown here on the right.

The previous method of displaying a gif file on the right is still available but now as an alternative there is the htm format. This format shows a page on the right of all the event links eg draw1.htm which contains an embedded draw1.gif file.

One advantage of this new format is that the page can be set in browsers accessing the page to be not cached - In user terms this means that any time a draw link is clicked the very latest version of the page is display rather than an old page that may have been viewed before and not refreshed by the browser. This ability to show the very latest pages has also been included in the Player Schedule web page listing all players and times in alphabetical order.

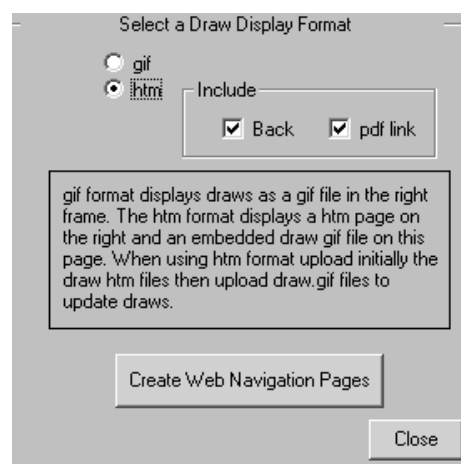
The only difference with the new format is that when creating the web navigation pages a series of htm files draw1.htm , draw2.htm etc are created by CAT and need to be uploaded to the website as well as the exported gif files draw1.gif, draw2.gif etc. If the pdf link is activated then all the draw.pdf files will also have to be uploaded eg draw1.pdf, draw2.pdf etc.

### Include pdf link

This selection inserts a link to a corresponding draw.pdf file at the top right of the gif image draw.htm page. The name of the link is Print (PDF) and when selected the corresponding pdf for the event draw will download and display in adobe acrobat. Once open the print option in Acrobat reader can be used to print the file. The advantage here is that if the selection Shrink to Fit is selected the printed copy will fit exactly onto the printed page.

### Back

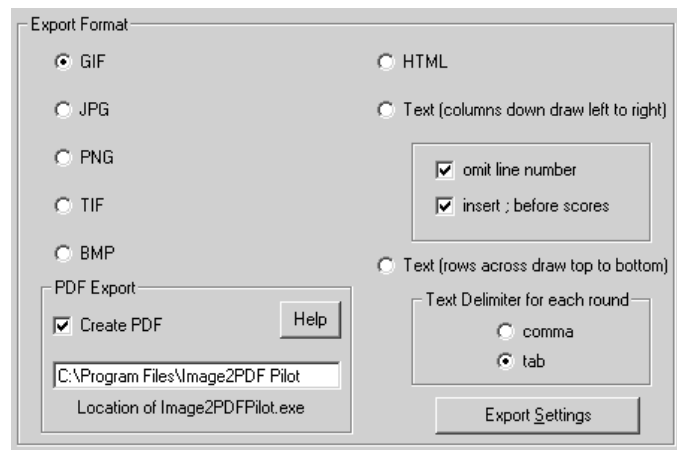
This selection inserts a Back link at the top right of the htm page. Once selected the back link takes the user back to the opening page for the event.



## Exporting PDF Draws in Print Event Draws

CAT will now create the pdf files automatically at the same time as creating the gif files. The automatic creation requires the download and installation of additional software, Image2PDF Pilot. This software once downloaded and installed from [www.colorpilot.com](http://www.colorpilot.com) will create the pdf files, provided the pdf export is selected in the Export Format tab in Print Event Draws as shown opposite.

The free version of Image2PDF places a message on each pdf file. To remove this message simply purchase Image2PDF for US\$39 from [www.colorpilot.com](http://www.colorpilot.com).



Alternatively the draw pdf files can still be created manually from the gif files using Adobe Acrobat full version ( not Acrobat reader). The advantage of the pdf files is that draws when printed will fit onto one page.

## Import / Export Utilities - Import

When importing players from a file using the Import/Export section in Utilities there is now a final confirmation prompt after all the entries are checked and before the players are added to the tournament. This enables the import to be stopped if necessary at this final confirmation. Changes can then be made to the import file and the import then started again.

## Player Entries

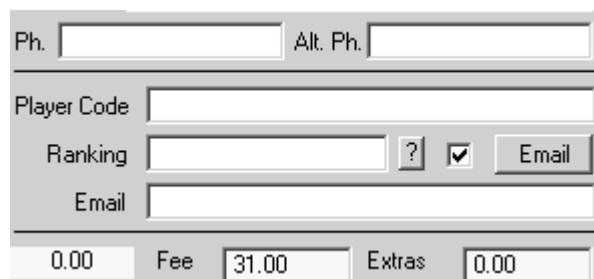
**Email Entries** - The entry of players from emails received from websites works very well. A player enters on the internet (for example at the 92 computing website) and an email is received as the entry. It is then simply a matter of copying all of the email using select all (Ctrl A) then copy (Ctrl-C). Then switch back to CAT, click Add, then click the email button. Then on the email entry screen click the Import from Clipboard button -The information copied from the email is then displayed and can be altered if required then added as a new entry.

However when you get a second entry via email from a player who is already entered into the tournament you cannot add this entry from the email as the player is already in the system. This email may contain an additional event or some change to the original players entry. To overcome this on the Player Detail toolbar (the far right of the CAT main menu) there is a new email button. This button allows quick access to the information copied from an email. When this Email button is selected the information copied from the email displays in the Player Detail toolbar immediately to the right of the Player Entries screen. This can then remain displayed in the toolbox on the right while the player is found and displayed in Player Entries. Information can simply be transferred from this Player Detail area on the right to the actual player entry on the left by retyping or by using copy and paste to transfer the information.



## Entry Email to other CAT systems

CAT can now create an entry email for another CAT system directly from the player entry page. There is now a tick box immediately to the left of the email button on each players entry screen. If this tick box is selected and then the email button clicked the player's entry information is transferred to the email screen.



The screenshot shows a form with the following fields and controls:

- Ph.
- Alt. Ph.
- Player Code
- Ranking  ?
- Email
- 0.00 Fee 31.00 Extras 0.00

When the Send CAT entry email button is selected this information is copied to the clipboard for placement in an email to another CAT system . When received at the other end this information is simply copied into the CAT system as a new players entry.

## Player Entries - View, Print & Export

The length of the ranking field on prints has been made wider.

## Tournament Planner

When initially entering players events into Player Entries before entries close, CAT now automatically calculates the entries for each event when accessing Tournament Planner. Each event is assumed to be a knockout event at this stage. This is an improvement from previous versions where the user had to initiate this calculation by previewing the entries summary in Player Entries | print section. Once the entries are closed and events created then CAT calculates the entries from the actual draws created when Event Analysis is selected as in previous versions.

# **CAT Version 5.2**

**February 2004**

## **Toolbars**

Toolbars have been added to CAT and will now appear if required to the right and underneath the existing CAT window. The toolbars will only be visible if the screen resolution is set to 1024x 768 or above. On 800x600 display settings there is not enough room to display the toolbars.

The default setting is to start CAT with the toolbars visible and minimised. To change these settings to either maximised, minimised or disabled select toolbars from the drop down menu at the top of the initial opening screen in CAT. The three toolbars are;

1. A Player Details toolbar appearing to the right of the standard CAT window which allows Player Information to be display independently of where you are in CAT at the time. No need to exit where you are and then click Player Entries - just go to the Player Details on the right. This toolbar allows searching either via the blue lookup where a players name is typed until the correct player displays or the ? lookup where part of the players name or player number can be typed or the next and previous buttons.
2. A CAT Toolbar, underneath the main CAT windows displaying all the main selections in CAT that can be selected from the main CAT menu. This allows for quick swapping between modules in CAT without the need to click exit then select again from the main menu.
3. A Reminders and to do list at the bottom of the screen.

## **Player Entries**

\* Find – This now incorporates the blue lookup text box , available elsewhere in CAT, which allows a name to be entered simply by typing enough of the name to identify the correct player then pressing the enter key to accept. The ? Button on this Find window gives the previous Player Entries find dialog from previous versions where a players entry number or part of their name can be typed to identify the player.

\* Withdrawal - A player will be automatically taken out of their events entered without the need to remove each of the events entered manually. Once withdrawn a prompt appears asking if a printed copy of this withdrawal is required. If accepted a receipt is printed for this player indicating the time and date of the withdrawal.

\* Receipt – this now contains much more detail including the players address details, phone numbers, email, the name of the tournament as well as the events entered, fees and payment details

\* Ranking – The Other Code field has been renamed ranking. This field can be used to enter a ranking code for a player e.g. ITN ranking, ITF ranking, WTA ranking, ATP ranking. In addition to this still being used as an other code field a singles and or doubles ranking can be entered here. To enter a singles ranking start the ranking with S e.g. S1234, Doubles only start with D e.g. D2341 and just a ranking not event specific enter the number itself 1234. Click the ? near this field for details for a summary of this information.

This ranking field can now be printed on the Player Entries event list providing extra information for selectors when establishing the seeds for events. Also it is possible when printing an event draw to list the player ranking to the left of the event draw – If lines and first round byes are selected and the switch Wildcards/ Qualifiers/ Rankings is selected.

\* Email - This selection now can be customized in the Extra selection and then Email confirmation options. In this section a subject can be entered, an option to start the email as Dear ..... where the given name is inserted, an extra text option to allow any message required to be included in the email, a footer and the ability to include event and payment details.

\* Extras – Player Entries Data Checks - More checks have been added to check or extract data from the player entries - only in doubles and only in singles selections have been added.

\* Print – Entry Lists – Country Club Filter – ITF Country totals – Totals the entries per nation and also a total of participating nations.

Fixes - Extended length names - When entering an extended name is you left out a full stop in the system name CAT would allow this but then print a blank name when printing event entry lists. Also when finding a player through the Find selection if that player had an extended length name a prompt appeared asking you to confirm the name even though it was correct. These are now repaired.

## **View / Edit Event Draws**

When viewing an event draw and left clicking a player or pair a details button displays. This button will display the entry details of the player ie address phone, entry numbers etc.

## **Match Results**

Event Status - the time and date of the last time an event was printed is displayed on the right of the status page.

Match Slips & Played – the time and date of the match slip entry displays on the right of the match slip detail

Print / Export Results - Tournament Summary

Summary – shows how many matches were planned, how many were played, how many were one set, two sets or three sets, how many matches were retirements (note result must include ret.) and how many matches were walkovers (Note – result must include w/o)

Detail – details of every event in the event range

Event Range – allows a range of events to be nominated otherwise all events are included



## **Time Draw**

New switch to limit how many matches are scheduled for any player in a Time Draw e.g. No more than 4 matches for the day for any player. Appears on the Time Draw initial switches toolbar - Set maximum matches per player.

## **Alter Time Draw**

Fix – The clash indicator appear on the wrong matches if you only have one court venue and you have allocated venues to matches and you then you moved a match. Work around was to save and exit Alter Time Draw then come back in and all was okay. This is repaired.

# **CAT Version 5.21**

**April 2004**

## **Match Control**

### **Setup - Rebuild**

A Rebuild button has been added to the Setup screen in Match Control. This can be used to double check the correct players are tagged as off or on court at any stage during a day's play. Sometimes CAT gets confused if numerous matches are deleted or moved about so if you notice CAT indicating a player is either on court or off court when in fact the reverse is true just click Setup followed by the rebuild button . This will then fix any errors detected.

Setup - Importing a Time Draw . - An option now appears which enables a Time Draw to be imported and any matches that have been played from the Time Draw will be left out of the list of matches to be played. There is a new tick box under the list of Time Draws which will leave out any matches with results entered. This will be useful if you wish to start the match control half way through a days play. In the past to do this you would have to import the entire Time Draw then delete the matches that had been already played.

Fix - When using Match Control and extended events ( events greater than event 47) the players in all matches were imported correctly but the match slip numbers for the extended events were imported incorrectly - This is now repaired.

## **Time Draw**

### **Extended Events**

Players Schedule (Boxed format) - When using extended event with the boxed format the events have displayed as Event X46, Event X47. This is now tidied up and the events show as their correct event number eg Event 47 Event 48 and the reference to the extended X is removed.

## **Print Event Draws**

Draw Layout - Duplex - If duplex is selected and your printer supports duplex printing (ie on both sides of the paper) then CAT will print draws on both sides of the sheet.

## **Tournament Setup**

Starting a new tournament - When starting a new tournament the entry fee collection log is now automatically cleared. In previous versions the amounts showing from a previous tournament carried over - They could be cleared by going to print the transaction log clicking cancel and the responding yes to the clear the fee collection log.

Fix - Lookup Databases - Utilities - In Version 5.20 if in Utilities you went to manage the previous database files in the Lookup Database button in Utilities a run time error occurred if the Player lookup toolbar on the right was open. This new version alerts you to this fact and closes this toolbar before accessing and creating the lookup tables.

## **Version 5 Full Installations**

If you wish to install Version 5 from scratch on a new PC without having to install Version 4 first then download the Version 5 full installation from [www.92computing.com](http://www.92computing.com) and follow the instructions on the site.